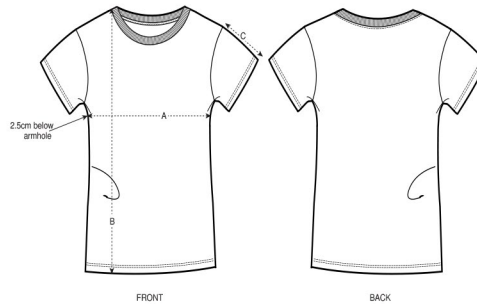




Unsre [hai:kuh] Version bedeutet:

100% gekämmte ringgesponnene Bio-Baumwolle

Normale Passform



Größen	XS	S	M	L	XL	XXL
A Breite (cm)	42	44.5	47.5	50.5	53.5	56.5
B Länge (cm)	62	64	66	68	69	69
C Ärmellänge (cm)	16	16	17	17	18	18

**OEKO-TEX®**  
 CONFIDENCE IN TEXTILES  
**STANDARD 100**  
 1112055 Centexbel



Tested for harmful substances.  
[www.oeko-tex.com/standard100](http://www.oeko-tex.com/standard100)



**FAIR  
 WEAR**